

NEWSLETTER #3 | JUNE 2022

Welcome to the 3rd Newsletter of the Hands-on SHAFE Erasmus+ project! We are happy to inform you about the progress of the project you are involved in or interested in. More information can be found online here.

IN THE SPOTLIGHT



Learning, Teaching, Training Activities Train the trainers (edition 2) 3rd – 6th May 2022 Warsaw

Agnieszka Ciesla (Politechnika Warszawa) and the Dean of the faculty Dr. Janos Valo welcomed all participants and gave a short introduction about the second edition of the Learning, Teaching, Training Activities (LTTA). Afterwards Javier Ganzarain (AFEdemy) introduced the LTTA agenda and the organised activities before Willeke van Staalduinen (AFEdemy) gave an introduction about the SHAFE concept and its evolution since 2017. After a presentation round of all participants, the aims of the LTTA were presented, mainly to present the current status of the modules and to discuss critical or focal points about improvements in their regard.

Javier Ganzarain (AFEdemy) presented the first version of the Hands-on SHAFE eLearning Platform. There the different SHAFE modules, the target groups supported by the Hands-on SHAFE facilitators, as well as the different personas representing these were presented.

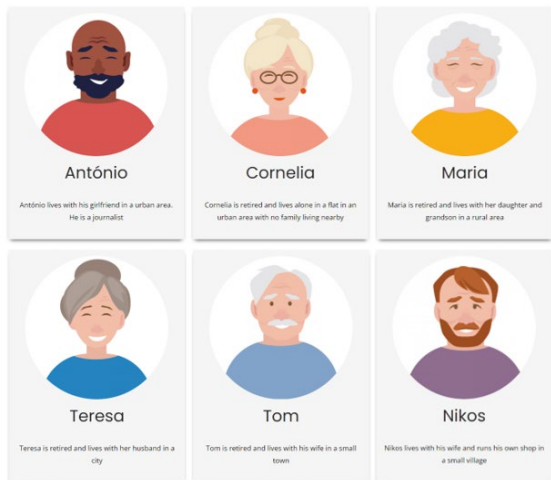
During the following days, the project partners presented the modules of the 2nd round processes they lead: TU Dublin "SMART", Caritas Diocesana de Coimbra "HEALTHY", airelle "BUSINESS" and Politechnika Warszawa "BUILT". After the LTTA, each partner will include the feedback provided by the peer reviews and the participants of the LTTA. Additionally, each day a study visit to a centre whose activity is related to the package presented was performed. So, the LTTA participants visited the Central Technology House, the Centre for Multigenerational Activity and Allotments in the city central area.

At the end of each day, a wrap-up session was performed aiming at sharing what people had learned thus far, and if the LTTA was already meeting the participants learning goals. After these intensive, productive and efficient days, the Hands-on SHAFE team continues with the development of the last learning modules.

TUDublin published a post on this topic on their website:

[READ MORE](#)

WHAT WE DID SO FAR



MEET THE HANDS-ON SHAFE PERSONAS

We have identified six characters, which are based in the so-called personas used within other European research projects and have been adapted to Hands-on-SHAFE.

Their main issues, what is important to them and what are the obstacles in their daily lives have been indicated and linked to the relevant learning modules and experience.

If you want to learn more about António, Cornelia, Maria, Teresa, Tom and Nikos and see how you could help them improve their lifestyle, you are invited to go to the meet section.

[READ MORE](#)



MULTIPLIER WEBINAR HANDS-ON SHAFE WELL VISITED

On January 12th 2022, AFEdemy and Politechnika Warszawska organised the multiplier webinar to present the developed e-learning modules.

[READ MORE](#)



THE FIRST MULTIPLIER EVENT IN GERMANY FOR THE HANDS-ON SHAFE PROJECT TOOK PLACE IN HANAU

On Wednesday 22 September 2021, the first multiplier event in Germany for the Hands-on SHAPE project took place in Hanau. The event was organised by ISIS Social Research in cooperation with the Senior Citizens' Office of the City of Hanau and was very well received.

[READ MORE](#)



HANDS-ON SHAFE POSTER AND FLYER RELEASED

In several languages, Poster and Flyer developed which briefly explains the SHAFE concept and how to become a facilitator to implement Smart Healthy Age-Friendly Environments (SHAPE).

[READ MORE](#)

WHAT'S COMING SOON!

- 👉 Development of the learning modules of the 2nd round
- 👉 The Personas stories and proposed learning pathways supporting the improvement of their everyday lifestyles, will be updated on the web to include the new learning modules
- 👉 Certification and manual are also on the way
- 👉 Announcement of Multiplier Events in all the countries and the international final event that will take place in Fall 2022

STAY TUNED!

TAKE A PICK TO THE WEBSITE

1st round published
online in different
languages

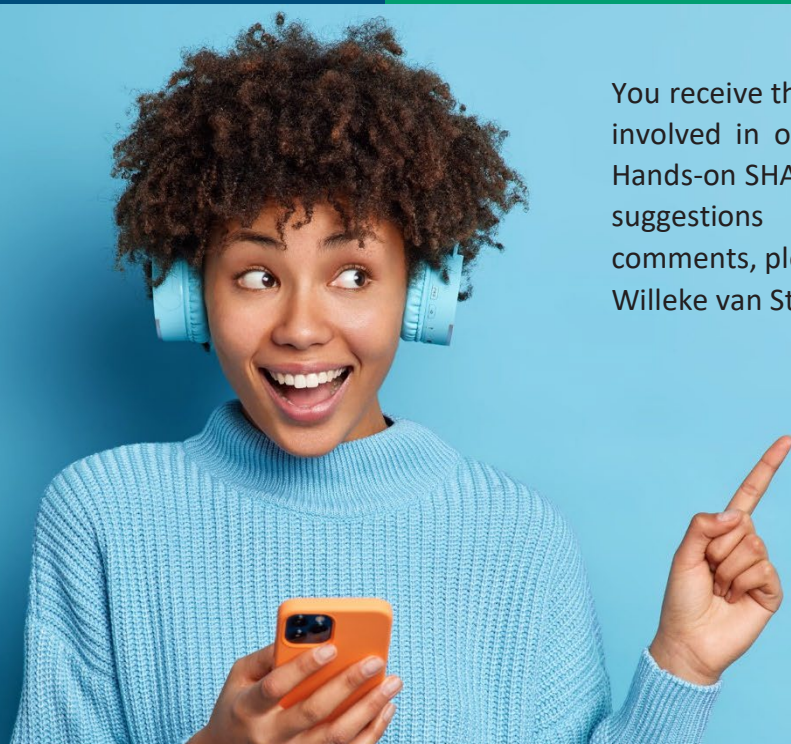
TRY IT!

Provide feedback
and endorsements
for quotes

USE IT!

Look at the web,
test, stay up to
date and more!

GO FOR IT!



You receive this newsletter because you are directly involved in or considered to be interested in the Hands-on SHAFE project. If you have any questions, suggestions for cooperation or any further comments, please let us know (Javier Ganzarain and Willeke van Staalduinen, info@afedemy.eu).

 hands-on-shafe.eu



Co-funded by
the European Union

The European Commission's support for the production of this publication does not constitute an endorsement of the contents, which reflect the views only of the authors, and the Commission cannot be held responsible for any use which may be made of the information contained therein.